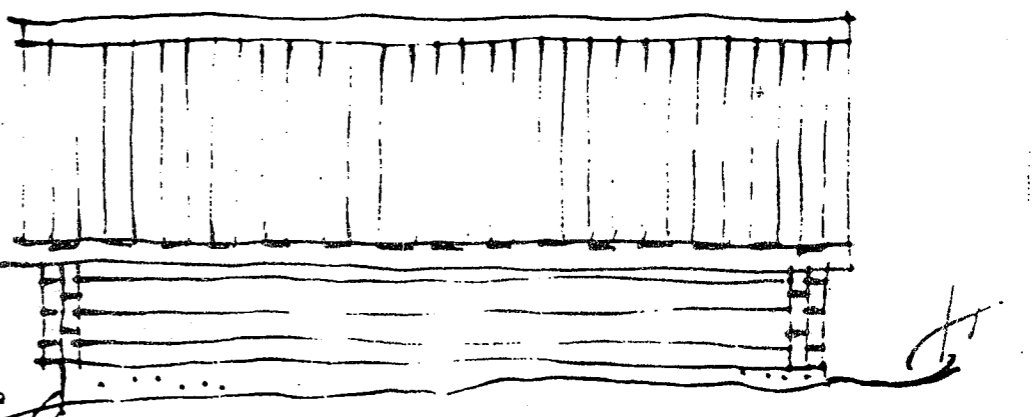
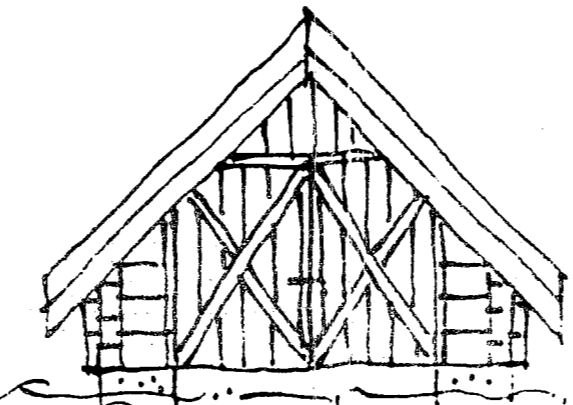
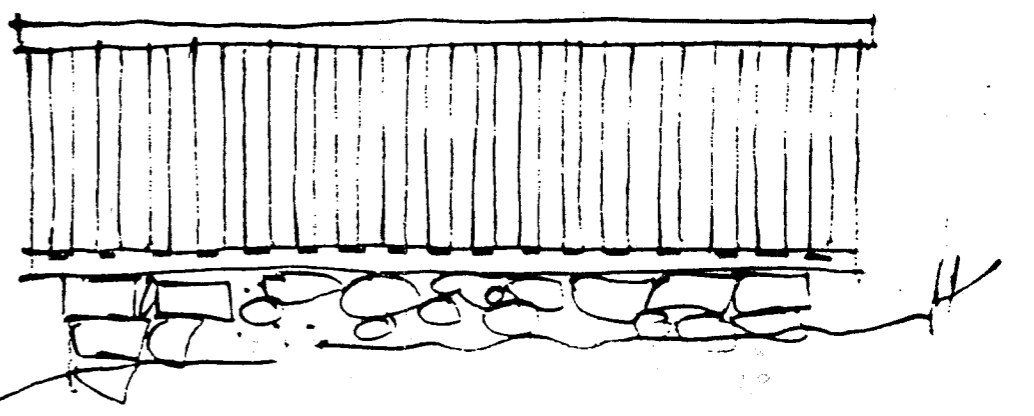
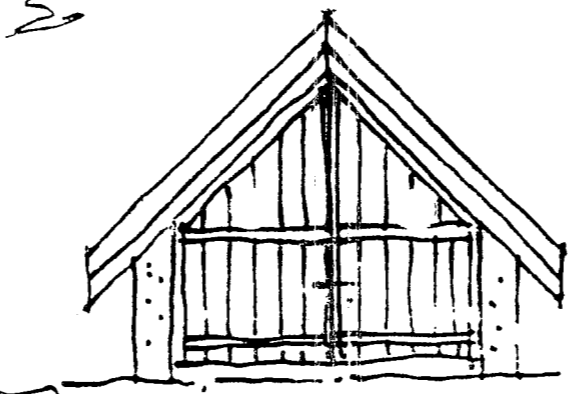
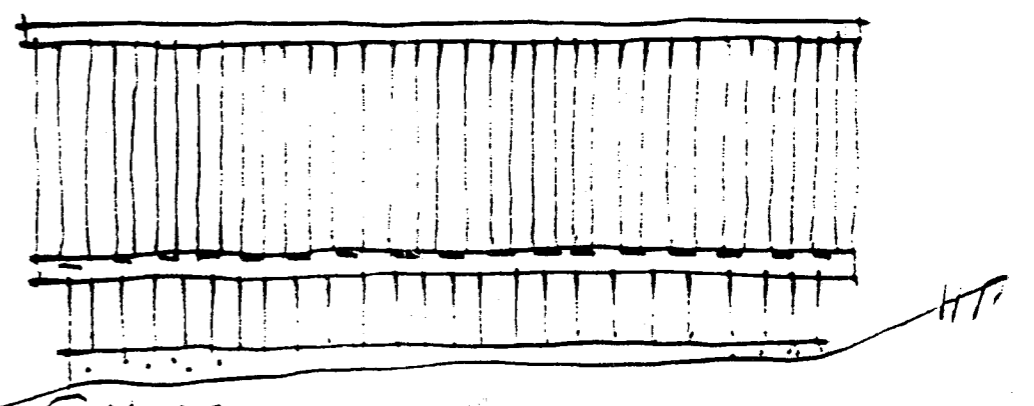
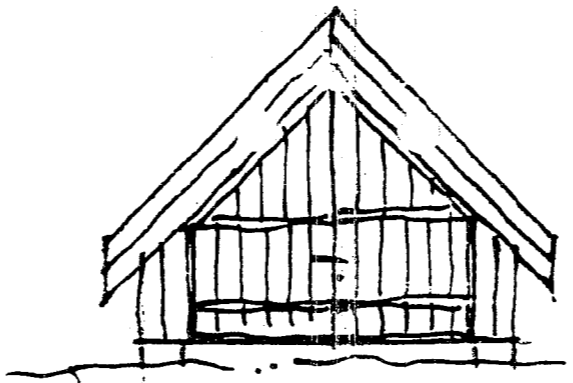
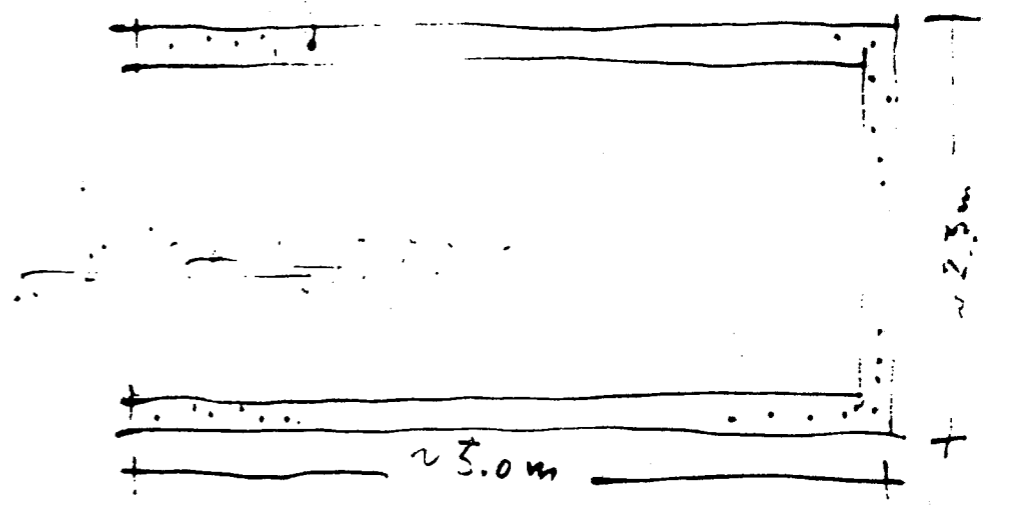
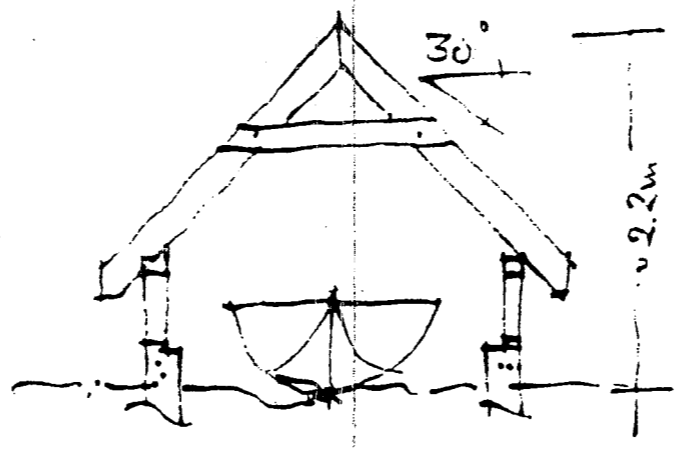
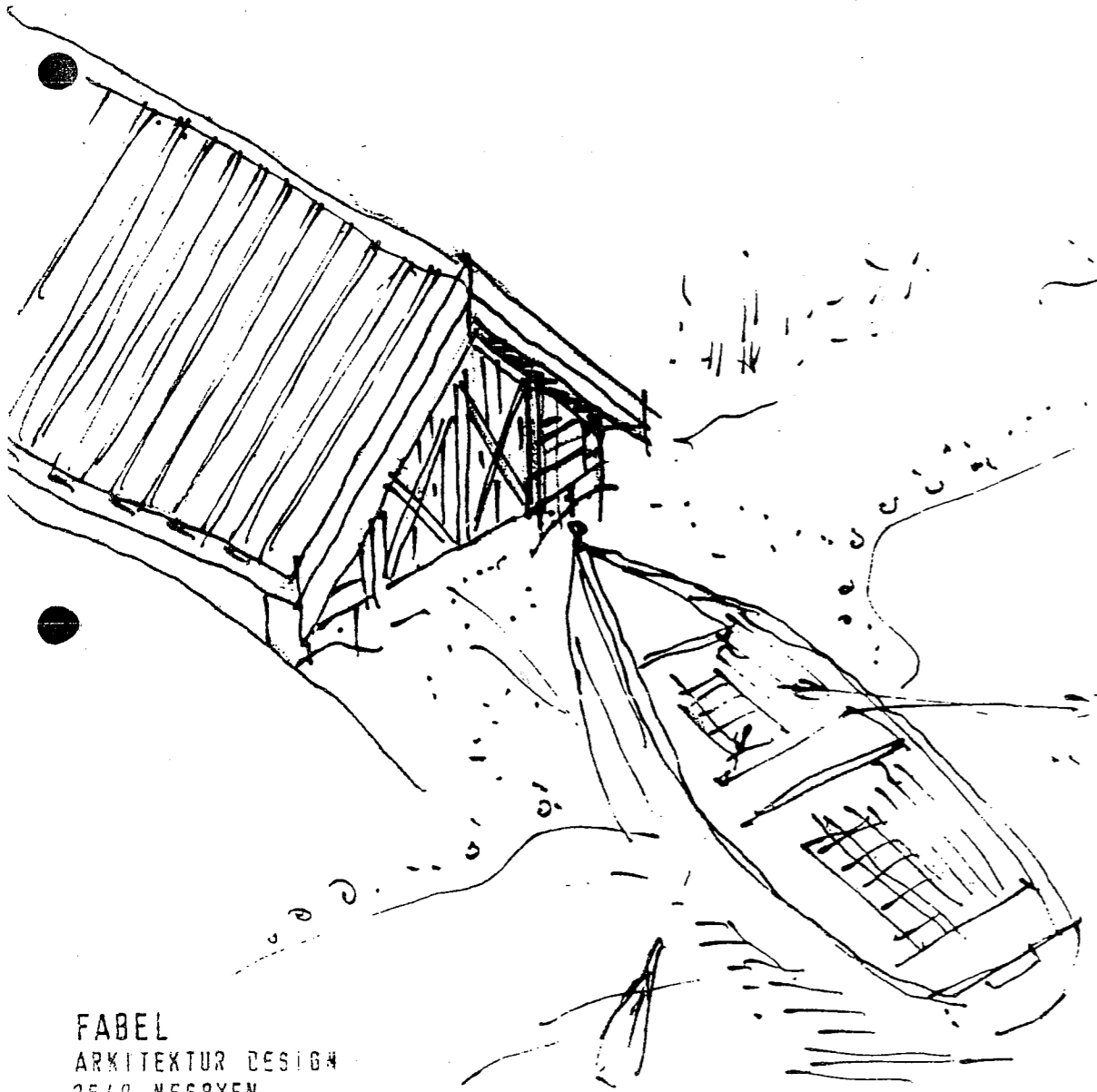


slipet = 1/2 - 1/4

Båthus + knevegge størrelse ca. 2.5 m x 5.0 m

- ① utført med stående kledding og bordtek
- ② utført med krevvegge forblendet med naturstein kan oppføres i tømmer/naturstein - bordtek
- ③ utført med løstede vegger - bordtek samme uttrykk oppnås ved bruk av liggende ukantet panel.



FABEL
 ARKITEKTUR DESIGN
 3540 NESBYEN
 TLF 32070126

et-slag til Båthus - Nes Kommune Mål 1:30